

Joint Stock Company
“MOGILEV REGION
DEVELOPMENT AGENCY”

212030 Belarus, Mogilev city,
Pervomayskaya st., 71, office 631
Phone\Fax: + 375 (222) 746191
E-mail: agencymogilev@ya.ru



PROJECTS
Mogilev Region

TOP-20

Mogilev Business Centre

Address: the territory near Minskoye shosse, Mogilev

Coordinates: 53.939729, 30.252684



Project description:

during project implementation it is planned to construct a business centre near Minskoye shosse, Mogilev, on the land plot with the total area of 5 ha. The business centre building can be used for:

- offices;
- hotel;
- shopping premises, including an automobile dealership;
- cinema;
- public catering facilities.



Competitive advantages of the project:

A favourable location:

- the land plot is situated near the highway M4 Minsk-Mogilev and is easily accessible by transport. The distance to the centre of Minsk is 190 km, the distance to the centre of Mogilev is 8 km, the distance to Mogilev Airport is 11 km.
- the land plot has no buildings, it is located in the centre of Kazimirovka residential area under construction with the estimated population of 59,6 thousand people.
- availability of the utilities system in close vicinity to the site.
- Mogilev needs a high-class business centre. At the moment in the city there is only one high-class business centre – the business centre of the category A. The approximate rental cost in a high level office building is about 8-12 USD per 1 sqm per month.
- availability of qualified manpower able to build and maintain the object;
- the construction of this multifunctional complex in the residential area mentioned above will allow to satisfy the demands of the citizens for modern services and will guarantee profits and return on investment.



Requirements for entry of investors into the project:

Establishment of a new company for the construction and maintenance of the complex.



Main benefits and preferences:

During the conclusion of the investment contract the investor is governed by the Law of the Republic of Belarus of July 12, 2013 "On Investments", the Decree of the President of the Republic of Belarus of August 6, 2009 n. 10 "On Creation of Additional Conditions for Investment Activity in the Republic of Belarus", the Resolution of the Council of Ministers of the Republic of Belarus of July 19, 2016 n. 563 "On Measures for the Implementation of Decree of the President of the Republic of Belarus of August 6, 2009 n. 10".

The investment contract is one of the possible forms of the public-private partnership, in case of its conclusion the investor will have the additional legal guarantees for the protection of his investments, there are also favorable conditions and preferences for the investment project implementation, among them:

- simplification of the procedure for providing land plots that presupposes the lease without conducting any auction;
- exemption from rental payments for the land plots and from the fee for the right to conclude a rental agreement;
- exemption from payment of import customs duties and VAT when processing equipment, its components and spare parts are imported with the purpose of implementation of the investment project;
- exemption from compensation of the losses incurred by agriculture and forestry sector due to land take;
- exemption from payment of the state duty for the issuance of permits to foreign citizens and people without citizenship that grant them the right to work in the Republic of Belarus;
- exemption from the levies earmarked for local government budgets;
- right to construct objects of investment activity and to perform project work for the later stages at the same time.

Pechersk Hotel and Entertainment Complex in Mogilev

Address: the territory near Minskoeoye shosse, Mogilev

Coordinates: 53.924311, 30.292050



Investment project concept:

During project implementation it is planned to construct a high class hotel in the territory of the Pechersk Park on the land plot with a total area of 5,4 ha.

The concept of the building development presupposes construction of the hotel complex with the total capacity of 50 beds, including the Spa Centre and the restaurant. It is also planned to build detached houses, like bungalows, on this land plot. The project includes the sports area and the entertainment centre as well.



Competitive advantages of the project:

- A number of international events are held in Mogilev every year and this is the reason why many guests visit the city, including those from the countries of near and far abroad. Among such events are the International Music Festival Golden Hit and the Sacred Music Festival God Almighty, the International Festival of Animated Films Animaevka, the International Investment Forum Mill of success and many other events. At the moment in the territory of Mogilev there are 4 hotels that correspond to the comfort class of 3 stars with the total room capacity of 238 rooms. The construction of a high class hotel, including bungalows, the entertainment centre and the sports area, will allow to satisfy the demand of the city guests for high quality hotel services.
- The site is situated in the green zone in the territory of the Pechersk Park used by the city's population.
- Availability of qualified manpower able to build and maintain the object.
- Need of the citizens of Mogilev in sports and fitness services, entertainment services.
- In the future it is planned to build a waterpark and a football arena in the adjacent territory, as well as recreation zones for the citizens.



Requirements for entry of investors into the project:

Establishment of a new company for the construction and maintenance of the hotel complex.



Main benefits and preferences:

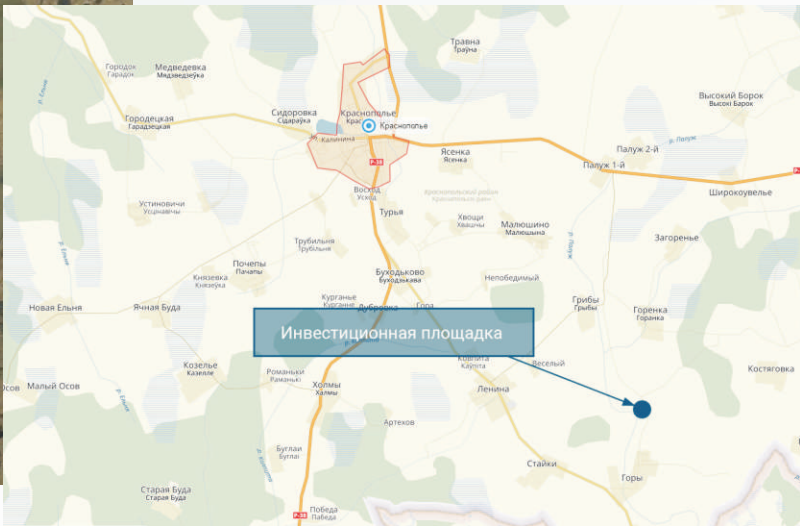
During the conclusion of the investment contract the investor is governed by the Law of the Republic of Belarus of July 12, 2013 "On Investments", the Decree of the President of the Republic of Belarus of August 6, 2009 n. 10 "On Creation of Additional Conditions for Investment Activity in the Republic of Belarus", the Resolution of the Council of Ministers of the Republic of Belarus of July 19, 2016 n. 563 "On Measures for the Implementation of Decree of the President of the Republic of Belarus of August 6, 2009 n. 10".

The investment contract is one of the possible forms of the public-private partnership, in case of its conclusion the investor will have the additional legal guarantees for the protection of his investments, there are also favorable conditions and preferences for the investment project implementation, among them:

- simplification of the procedure for providing land plots that presupposes the lease without conducting any auction;
- exemption from rental payments for the land plots and from the fee for the right to conclude a rental agreement;
- exemption from payment of import customs duties and VAT when processing equipment, its components and spare parts are imported with the purpose of implementation of the investment project;
- exemption from compensation of the losses incurred by agriculture and forestry sector due to land take;
- exemption from payment of the state duty for the issuance of permits to foreign citizens and people without citizenship that grant them the right to work in the Republic of Belarus;
- exemption from the levies earmarked for local government budgets;
- right to construct objects of investment activity and to perform project work for the later stages at the same time.

Creation of the recreation zone near the village of Gory, the Paluzhskoye Reservoir, Krasnopolye District, with the organization of public services and amenities in the adjacent territories.

Address: the territory adjacent to the Paluzhskoye Reservoir, 2 km to the northwest from the village of Gory
Coordinates: 53° 14'50"N; 31° 33'18"E



Competitive advantages of the project:

- The site is undeveloped, no encumbrances.
- The Paluzhskoye Reservoir is the main resting place used by the inhabitants of Krasnopolye District for recreational purposes.
- Due to the absence of rest areas with modern conveniences in these territories, this project will allow to satisfy the demands for modern recreational services and will guarantee profits and return on investment.



Main benefits and preferences:

- Land plot is provided without conducting any auction;
- Exemption from rental payments for the land plots and from the fee for the right to conclude a rental agreement;
 - Exemption from payment of import customs duties and VAT when processing equipment, its components and spare parts are imported with the purpose of implementation of the investment project;
 - Exemption from compensation of the losses incurred by agriculture and forestry sector due to land take;
 - Exemption from payment of the state duty for the issuance of permits to foreign citizens and people without citizenship that grant them the right to work in the Republic of Belarus;
 - Exemption from the levies earmarked for local government budgets;
- Right to construct objects of investment activity and to perform project work for the later stages at the same time;
- Commercial organizations located in the territory of small and medium-sized settlements and rural areas that conduct activities in these territories during the period of 7 years are exempt from :
 - tax on profits obtained from the realization of own-produced goods (works, services), as well as from real estate
 - tax charged on the cost of permanent structures (buildings, constructions).
- Employers and commercial organizations registered in the territory of the southeastern districts of Mogilev Region in the period from 1 July 2015 until 31 December 2020 that produce goods (fulfill works, provide services) in these territories during the period of 7 years can avail of benefits concerning compulsory insurance contributions for reaching retirement age, onset of disability and loss of breadwinner (pension insurance) paid to the State non-budgetary fund of social protection of the population. The fixed rate for such insurance contributions is 24%.
- The expenses related to the construction of the utility and transport infrastructure required for the implementation by companies and private entrepreneurs of investment projects in the agricultural and industrial sectors in the territory of the southeastern districts of Mogilev Region will be covered, in the period from 1 July 2015 until 31 December 2020, in the following way: 50 per cent using the funds of the republican budget and 50 per cent using the funds of the Mogilev Region consolidated budget.



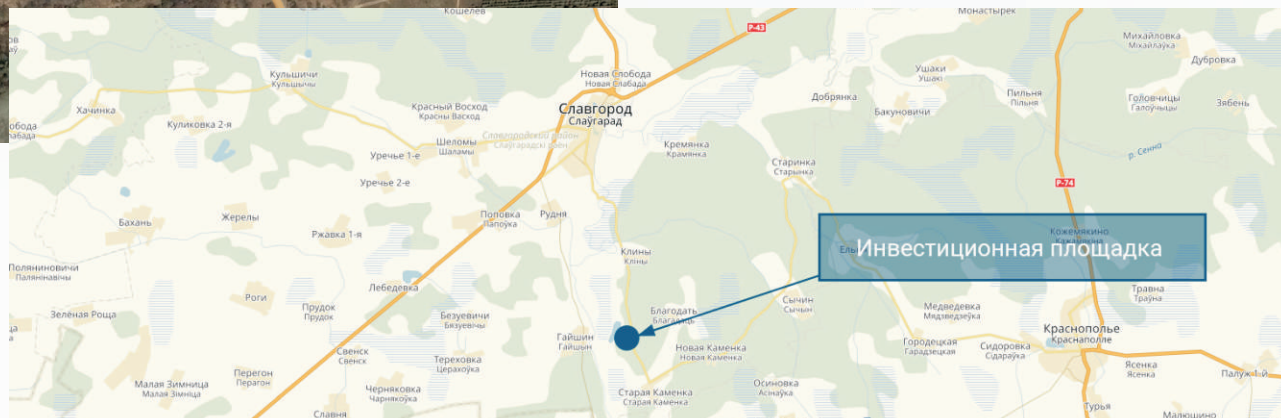
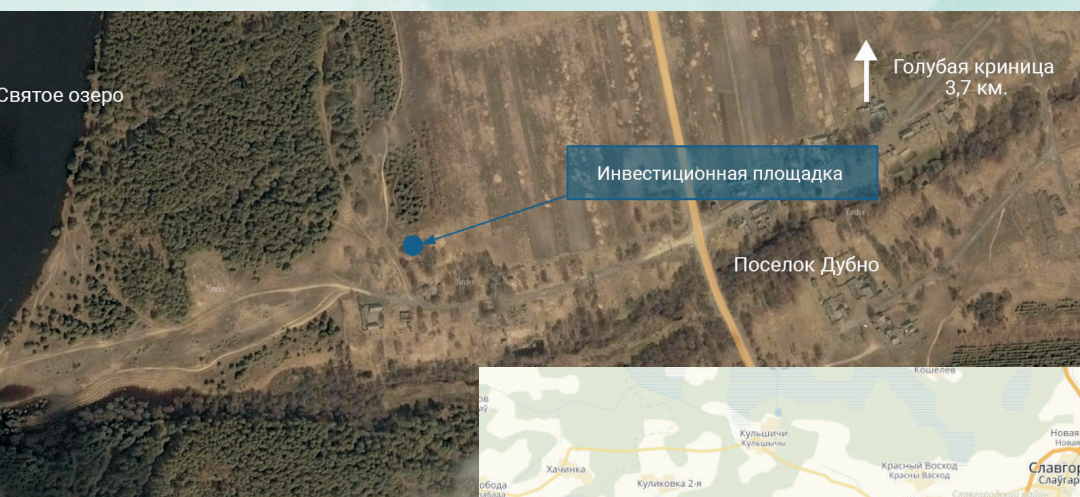
Investment project concept:

During project implementation it is planned to organize a recreation zone for rest, active leisure and amateur fishing, using the land plot with an approximate area of 1 ha. It is planned to construct single-storey houses (6 buildings): a fisherman's house, a leisure house, etc., one building with a banquet hall and a kitchen, baths, garden pavilions, shelters, a berth for boats, catamarans, bridges for fishing, amenities.

Construction of the rural tourism house near the village of Dubno, the Blue Spring and Lake Sviatoe, Slavgorod District

Address: the territory near the village of Dubno, Slavgorod District

Coordinates: 53° 20'36"N; 31° 1'38"E



Investment project concept:

During project implementation it is planned to construct a rural tourism house and to organize a recreation zone for active leisure, fishing and hunting.



Competitive advantages of the project:

- Unique natural environment: the site is 4 km away from the Blue Spring, hydrographic natural monument of national significance; it is 700 m away from Lake Sviatoe and 2 km away from the River Sozh. According to approximate estimates more than 100 000 tourists visit the Blue Spring every year, including those who arrive from abroad.
- The site is situated in close vicinity to large forest areas.
- The distance from Slavgorod will be only 10 km when the construction of the bridge crossing is finished.
- Due to the absence of rest areas with modern conveniences in these territories, this rural tourism house will allow to satisfy the demands for modern recreational services and will guarantee profits and return on investment.



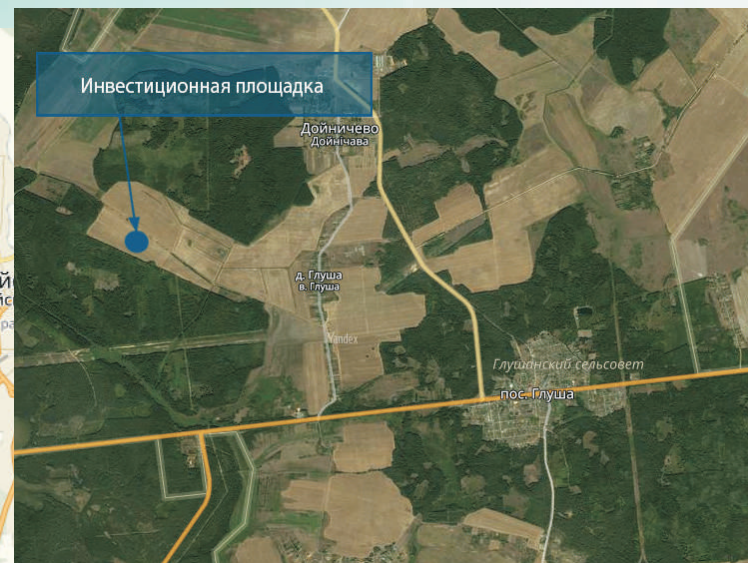
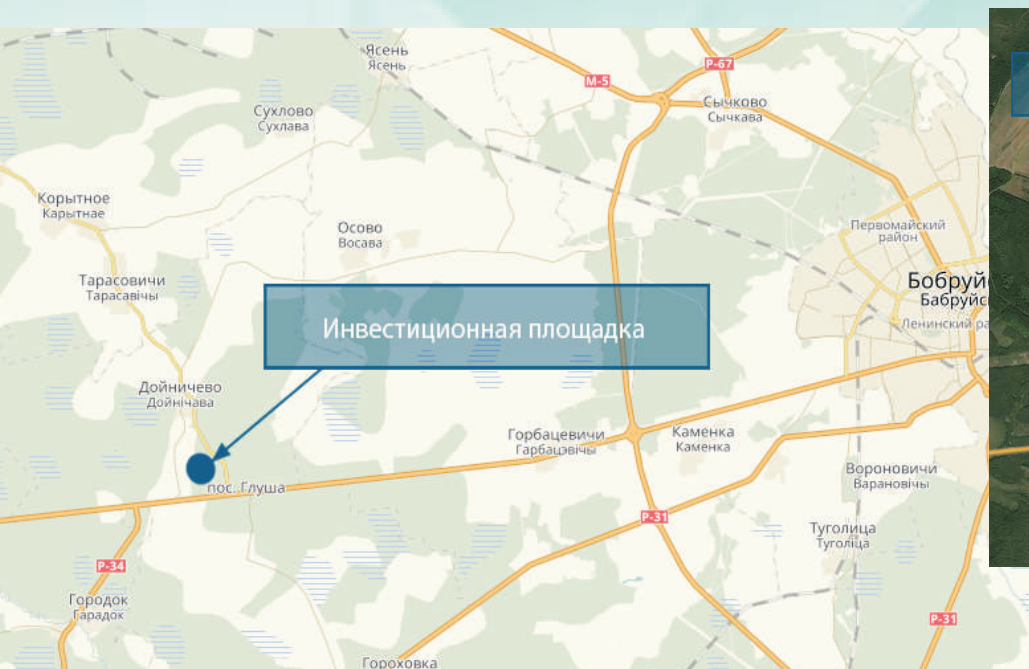
Main benefits and preferences:

- Land plot is provided without conducting any auction;
- Exemption from rental payments for the land plots and from the fee for the right to conclude a rental agreement;
 - Exemption from payment of import customs duties and VAT when processing equipment, its components and spare parts are imported with the purpose of implementation of the investment project;
 - Exemption from compensation of the losses incurred by agriculture and forestry sector due to land take;
 - Exemption from payment of the state duty for the issuance of permits to foreign citizens and people without citizenship that grant them the right to work in the Republic of Belarus;
 - Exemption from the levies earmarked for local government budgets;
 - Right to construct objects of investment activity and to perform project work for the later stages at the same time;
- Commercial organizations located in the territory of small and medium-sized settlements and rural areas that conduct activities in these territories during the period of 7 years are exempt from:
 - tax on profits obtained from the realization of own-produced goods (works, services), as well as from real estate
 - tax charged on the cost of permanent structures (buildings, constructions).
- Employers and commercial organizations registered in the territory of the southeastern districts of Mogilev Region in the period from 1 July 2015 until 31 December 2020 that produce goods (fulfill works, provide services) in these territories during the period of 7 years can avail of benefits concerning compulsory insurance contributions for reaching retirement age, onset of disability and loss of breadwinner (pension insurance) paid to the State non-budgetary fund of social protection of the population. The fixed rate for such insurance contributions is 24%.
 - The expenses related to the construction of the utility and transport infrastructure required for the implementation by companies and private entrepreneurs of investment projects in the agricultural and industrial sectors in the territory of the southeastern districts of Mogilev Region will be covered, in the period from 1 July 2015 until 31 December 2020, in the following way: 50 per cent using the funds of the republican budget and 50 per cent using the funds of the Mogilev Region consolidated budget.

Engineering and construction of the pig breeding complex, with a capacity of 54000 heads per year, near the village of Glusha, Bobruisk District

Address: the territory near the village of Glusha, Bobruisk District

Coordinates: 53.102864, 28.786476



Competitive advantages of the project:

- Local raw materials base;
- Availability of manufacturing facilities of the Bobruisk Plant of Bread Products that produces pig feed;
- Availability of land plots that can be used for the construction of a livestock breeding complex and creation of feed resources;
- Availability of qualified manpower able to build and maintain the object;
- The site is 30 km away from Bobruisk and 3 km away from the motorway P-43 Zvenchatka (border of the Russian Federation)-Krichev-Bobruisk-Ivatsevichi.



Requirements for entry of investors into the project:

Establishment of a new enterprise.



Main benefits and preferences:

- Land plot is provided without conducting any auction;
- Exemption from rental payments for the land plots and from the fee for the right to conclude a rental agreement;
- Exemption from payment of import customs duties and VAT when processing equipment, its components and spare parts are imported with the purpose of implementation of the investment project;
- Exemption from compensation of the losses incurred by agriculture and forestry sector due to land take;
- Exemption from payment of the state duty for the issuance of permits to foreign citizens and people without citizenship that grant them the right to work in the Republic of Belarus;
- Exemption from the levies earmarked for local government budgets;
- Right to construct objects of investment activity and to perform project work for the later stages at the same time;
- Commercial organizations located in the territory of small and medium-sized settlements and rural areas that conduct activities in these territories during the period of 7 years are exempt from :
 - tax on profits obtained from the realization of own-produced goods (works, services), as well as from real estate
 - tax charged on the cost of permanent structures (buildings, constructions).

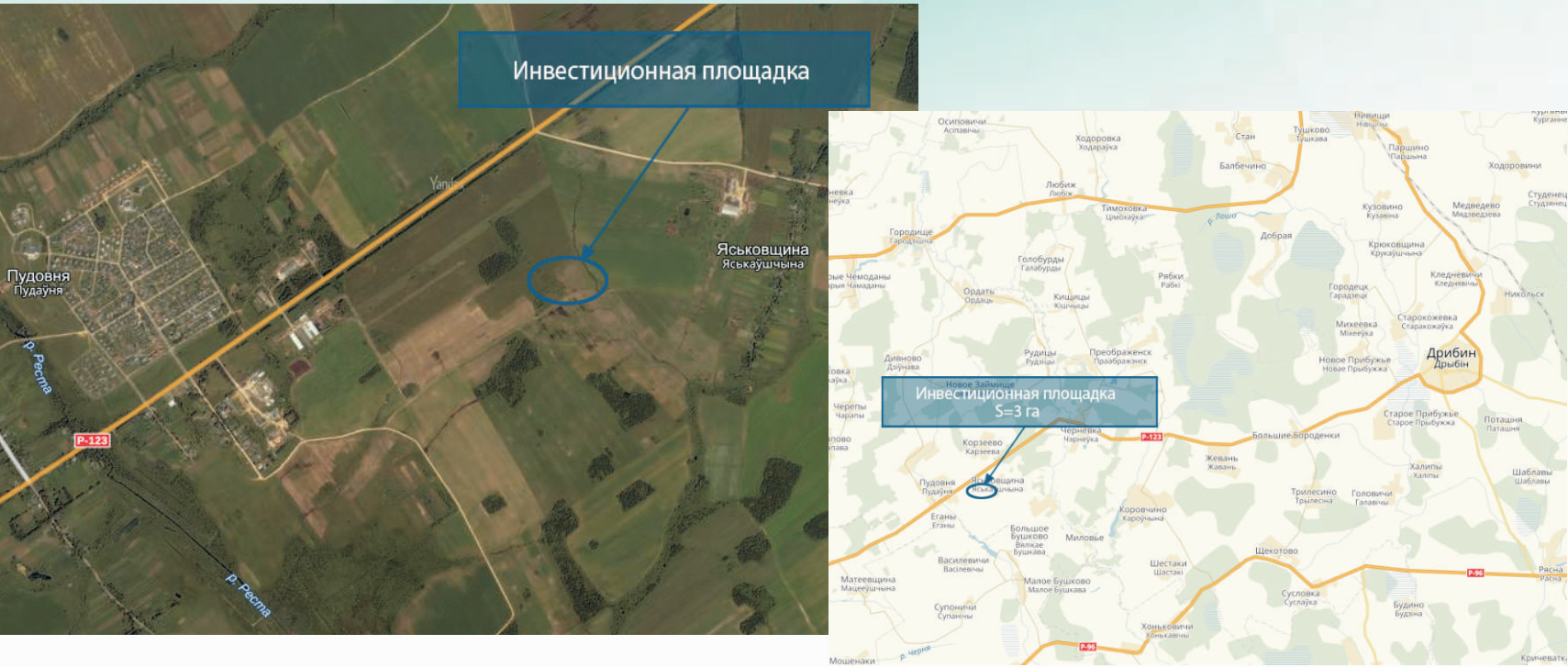


Project description:

During project implementation it is planned to construct a pig breeding complex with a capacity of 54000 heads, to produce up to 7 kilotons of high-quality meat, to bring a breed herd, to develop a special zone in order to grow feeds on the land belonging to agricultural enterprises of the region, granting a lease of land plots. There is a possibility for further meat processing and production of finished goods using the manufacturing facilities of the existing meat processing plants in Mogilev, Bobruisk and customer-owned raw materials. All meat processing plants have the certificates granting them the right to supply their products to the CIS member states. The approximate area of the land plot is 17,5 ha. The approximate volume of investments is 35 000 000 \$.

Construction of the rabbit breeding farm near Pudovnya agro-town, Dribin District

Address: the territory near Pudovnya agro-town, Dribin District
Coordinates: 54° 3'24' N, 30° 40'49' E



- Competitive advantages of the project:
- Availability of the land plot without any buildings that can be used for the construction of a rabbit farm and creation of feed resources;
 - Availability of qualified manpower able to build and maintain the object;
 - In the territory of the land plot there is canalization, water supply system and electrical power network;
 - The site is only 1 km away from the motorway P-123 Priso-Mostok-Dribin-Gorki.



Requirements for entry of investors into the project:
Establishment of a new enterprise.



- Main benefits and preferences:
- Land plot is provided without conducting any auction;
 - Exemption from rental payments for the land plots and from the fee for the right to conclude a rental agreement;
 - Exemption from payment of import customs duties and VAT when processing equipment, its components and spare parts are imported with the purpose of implementation of the investment project;
 - Exemption from compensation of the losses incurred by agriculture and forestry sector due to land take;
 - Exemption from payment of the state duty for the issuance of permits to foreign citizens and people without citizenship that grant them the right to work in the Republic of Belarus;
 - Exemption from the levies earmarked for local government budgets;
 - Right to construct objects of investment activity and to perform project work for the later stages at the same time;
 - Commercial organizations located in the territory of small and medium-sized settlements and rural areas that conduct activities in these territories during the period of 7 years are exempt from tax on profits obtained from the realization of own-produced goods (works, services), as well as from real estate tax charged on the cost of permanent structures (buildings, constructions).



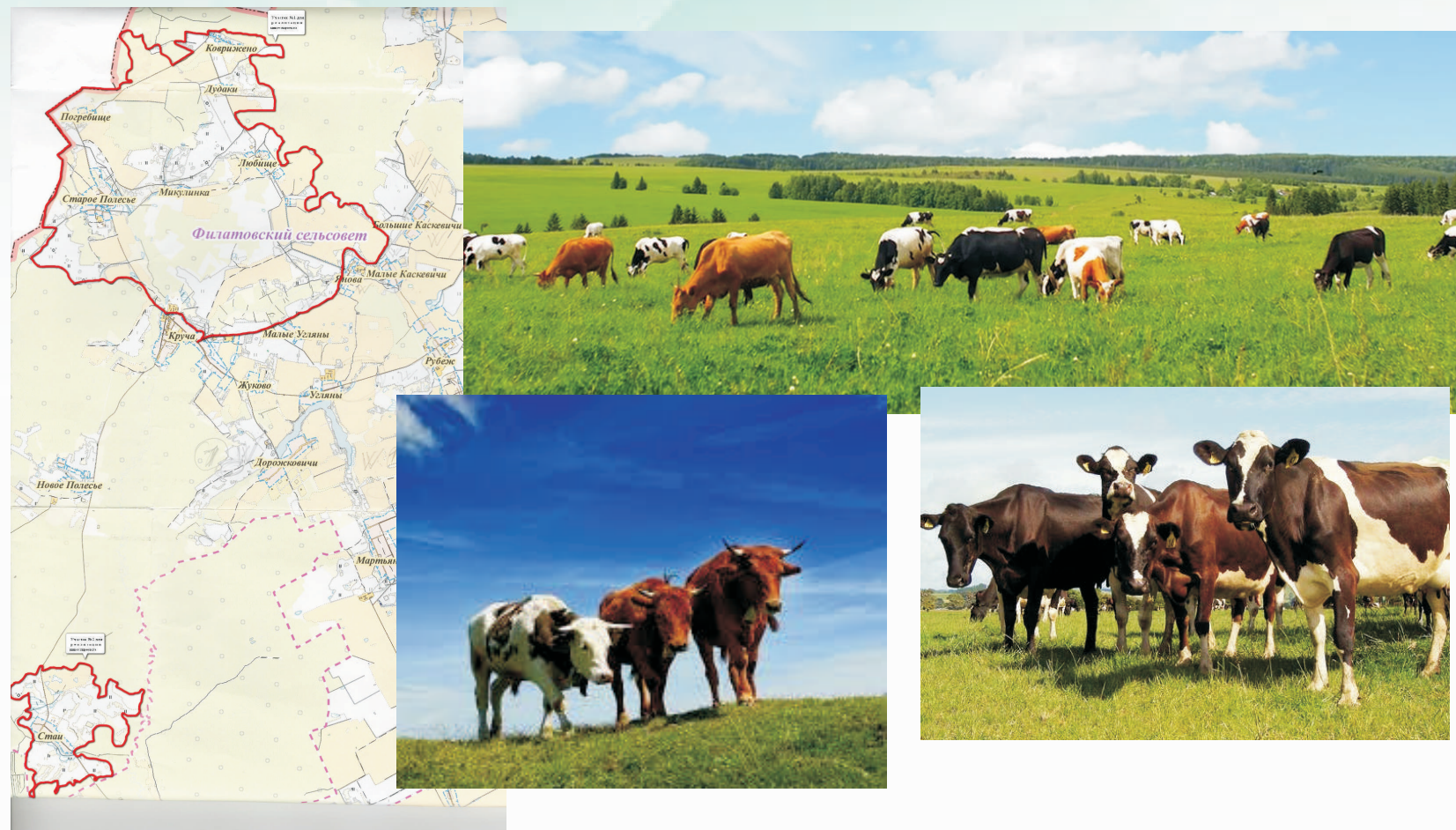
Project description:
During project implementation it is planned to construct a rabbit farm with a capacity of 3000-5000 doe rabbits on the land plot with a total area of about 3 ha, a feed processing building and a specialized workshop, to bring a breed herd, to develop a special zone in order to grow feeds on the land belonging to agricultural enterprises of the region, granting a lease of land plots. There is a possibility for further meat processing and production of finished goods, using the manufacturing facilities of the existing meat processing plants in Mogilev and Bobruisk. All meat processing plants have the certificates granting them the right to supply their products to the CIS member states.



Construction of the closed-loop livestock breeding complex specialized in the beef cattle breeding and meat processing, near the village of Krucha, Krugloye District

Address: village of Krucha, Krugloye District

Coordinates: 54.274299, 29.542799



Project description:

During project implementation it is planned to construct a livestock breeding farm (3000-5000 heads), to bring a breed herd, to develop a special zone in order to grow feeds on the land belonging to agricultural enterprises of the region, granting a lease of land plots. The investors can be provided with the land plots with a total area of 2047,5 ha, the average number of points of the farming lands is 34,5. The lease period will be determined by the local executive committee during the negotiations. There is also a possibility for the investor to buy unused agricultural facilities. There is a possibility for further meat processing and production of finished goods using the manufacturing facilities of the existing meat processing plants in Mogilev, Bobruisk and customer-owned raw materials. All meat processing plants have the certificates granting them the right to supply their products to the CIS member states. The main target market is the Russian Federation (regions of the Central and Northwestern Federal Districts, as well as Moscow and Saint-Petersburg).



Competitive advantages of the project:

- Local raw materials base;
- Availability of land plots that can be used for the construction of a livestock breeding complex and creation of feed resources;
- Availability of qualified manpower able to build and maintain the object.



Requirements for entry of investors into the project:

Establishment of a new enterprise.



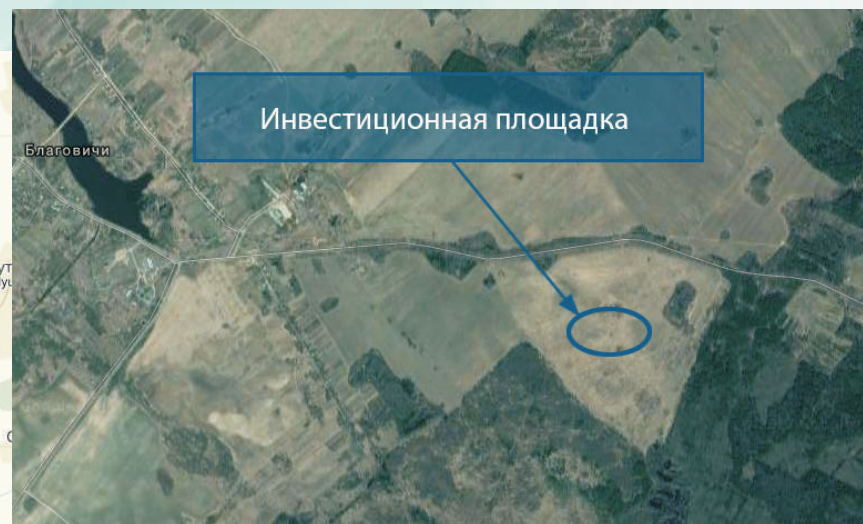
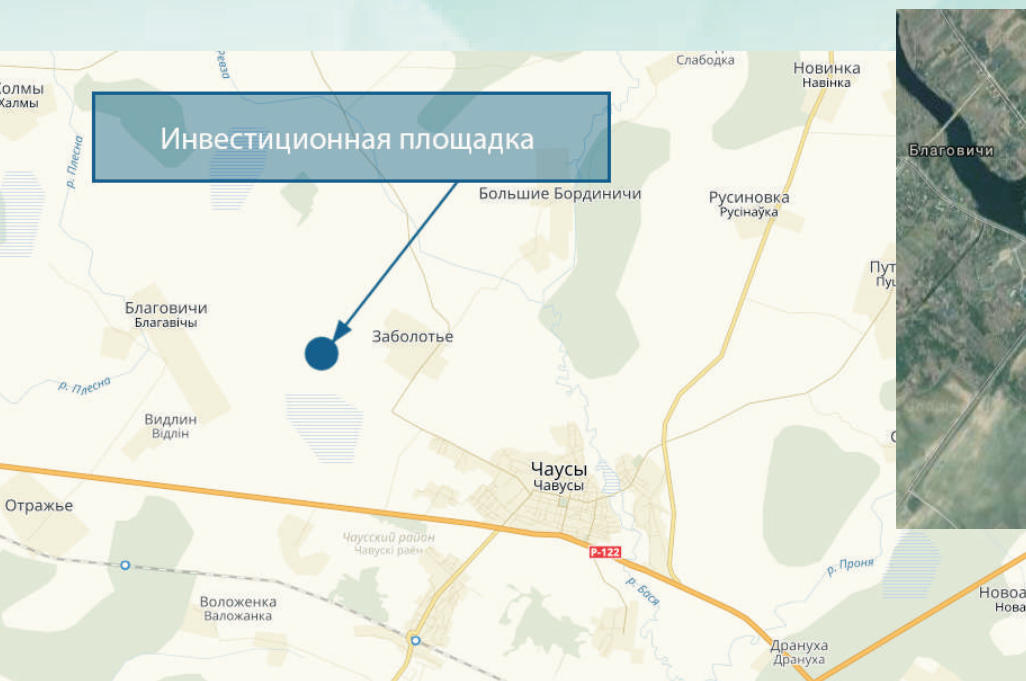
Main benefits and preferences:

- Land plot is provided without conducting any auction;
- Exemption from rental payments for the land plots and from the fee for the right to conclude a rental agreement;
- Exemption from payment of import customs duties and VAT when processing equipment, its components and spare parts are imported with the purpose of implementation of the investment project;
- Exemption from compensation of the losses incurred by agriculture and forestry sector due to land take;
- Exemption from payment of the state duty for the issuance of permits to foreign citizens and people without citizenship that grant them the right to work in the Republic of Belarus;
- Exemption from the levies earmarked for local government budgets;
- Right to construct objects of investment activity and to perform project work for the later stages at the same time;
- Commercial organizations located in the territory of small and medium-sized settlements and rural areas that conduct activities in these territories during the period of 7 years are exempt from:
 - tax on profits obtained from the realization of own-produced goods (works, services), as well as from real estate
 - tax charged on the cost of permanent structures (buildings, constructions).

Construction of the livestock breeding complex near the village of Blagovichi, Chausy District

Address: the territory near the village of Blagovichi, Chausy District

Coordinates: 53° 49' 46" N, 30° 53' 10" E



Project description:

During project implementation it is planned to construct a livestock breeding farm (3000-5000 heads) on the land plot with a total area of 44,5 ha, to bring a breed herd, to develop a special zone in order to grow feeds on the land belonging to agricultural enterprises of the region, granting a lease of land plots. The lease period will be determined by the local executive committee during the negotiations. There is also a possibility for the investor to buy unused agricultural facilities. There is a possibility for further meat processing and production of finished goods using the manufacturing facilities of the existing meat processing plants in Mogilev, Bobruisk and customer-owned raw materials. All meat processing plants have the certificates granting them the right to supply their products to the CIS member states. The main target market is the Russian Federation.



Competitive advantages of the project:

- Local raw materials base;
- Availability of land plots that can be used for the construction of a livestock breeding complex and creation of feed resources;
- Availability of qualified manpower able to build and maintain the object;
- The site is 2,5 km away from the motorway P-122 Mogilev-Cherokov-Kostiukovichi.



Requirements for entry of investors into the project:

Establishment of a new enterprise.



Main benefits and preferences:

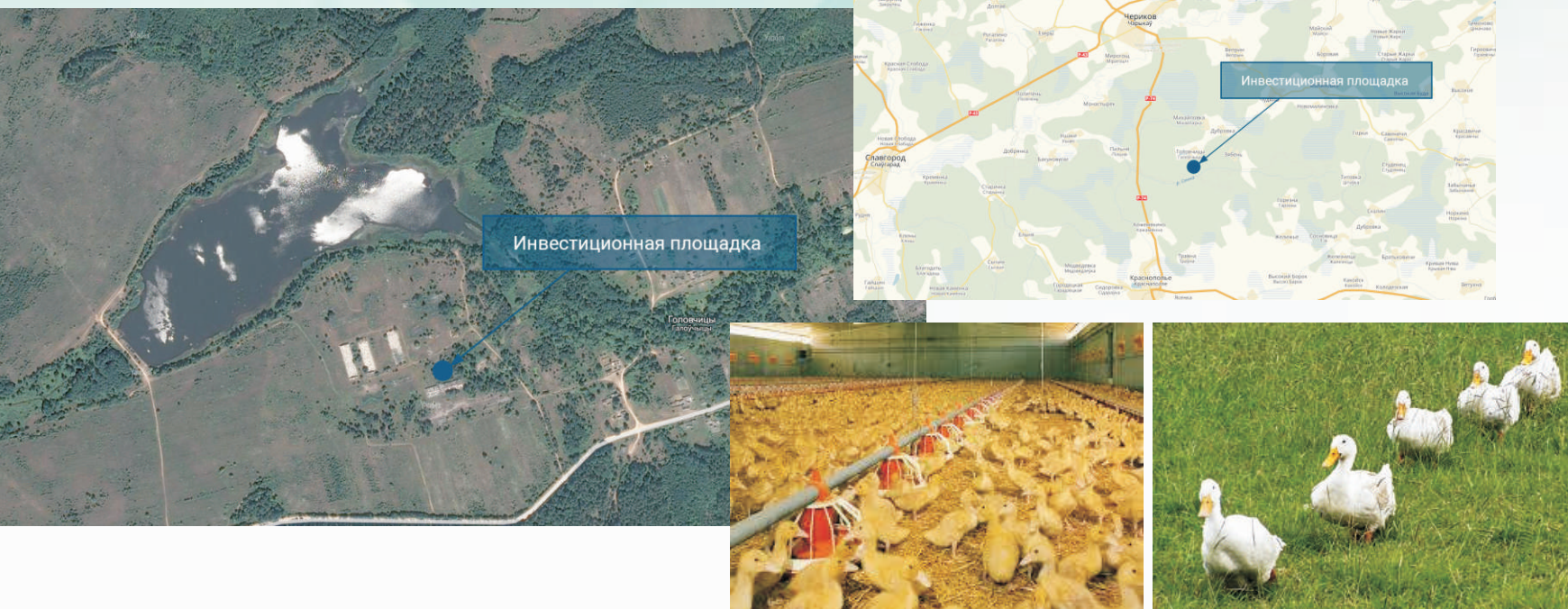
- Land plot is provided without conducting any auction;
- Exemption from rental payments for the land plots and from the fee for the right to conclude a rental agreement;
- Exemption from payment of import customs duties and VAT when processing equipment, its components and spare parts are imported with the purpose of implementation of the investment project;
- Exemption from compensation of the losses incurred by agriculture and forestry sector due to land take;
- Exemption from payment of the state duty for the issuance of permits to foreign citizens and people without citizenship that grant them the right to work in the Republic of Belarus;
- Exemption from the levies earmarked for local government budgets;
- Right to construct objects of investment activity and to perform project work for the later stages at the same time;
- Commercial organizations located in the territory of small and medium-sized settlements and rural areas that conduct activities in these territories during the period of 7 years are exempt from:
 - tax on profits obtained from the realization of own-produced goods (works, services), as well as from real estate
 - tax charged on the cost of permanent structures (buildings, constructions).



Construction of the duck breeding farm near the village of Golovchitsy, Cherikov District

Address: the territory near the village of Golovchitsy, Cherikov District

Coordinates: 53° 27'21"N;31° 27'3"E



Project description:

During project implementation it is planned to construct a duck breeding farm (up to 20 000 birds), poultry houses with a total area of 8000 sq.m., a feed processing building and a poultry slaughter house on the land plot with a total area of 5 ha. It is also planned to develop a special zone in order to grow feeds on the land belonging to agricultural enterprises of the region, granting a lease of land plots. There is a possibility for further meat processing and production of finished goods, using the manufacturing facilities of the existing meat processing plants in Mogilev and Bobruisk. All meat processing plants have the certificates granting them the right to supply their products to the CIS member states.



Competitive advantages of the project:

- Availability of the land plot that can be used for the construction of a duck breeding farm and creation of feed resources.
- Possibility to provide the investor with unused agricultural facilities.
- The site is located in close vicinity to a water body.
- Availability of qualified manpower able to build and maintain the object.
- The site is 5 km away from the motorway P74 Cherikov-Krasnopolye-Khotimsk.



Requirements for entry of investors into the project:

Establishment of a new enterprise.



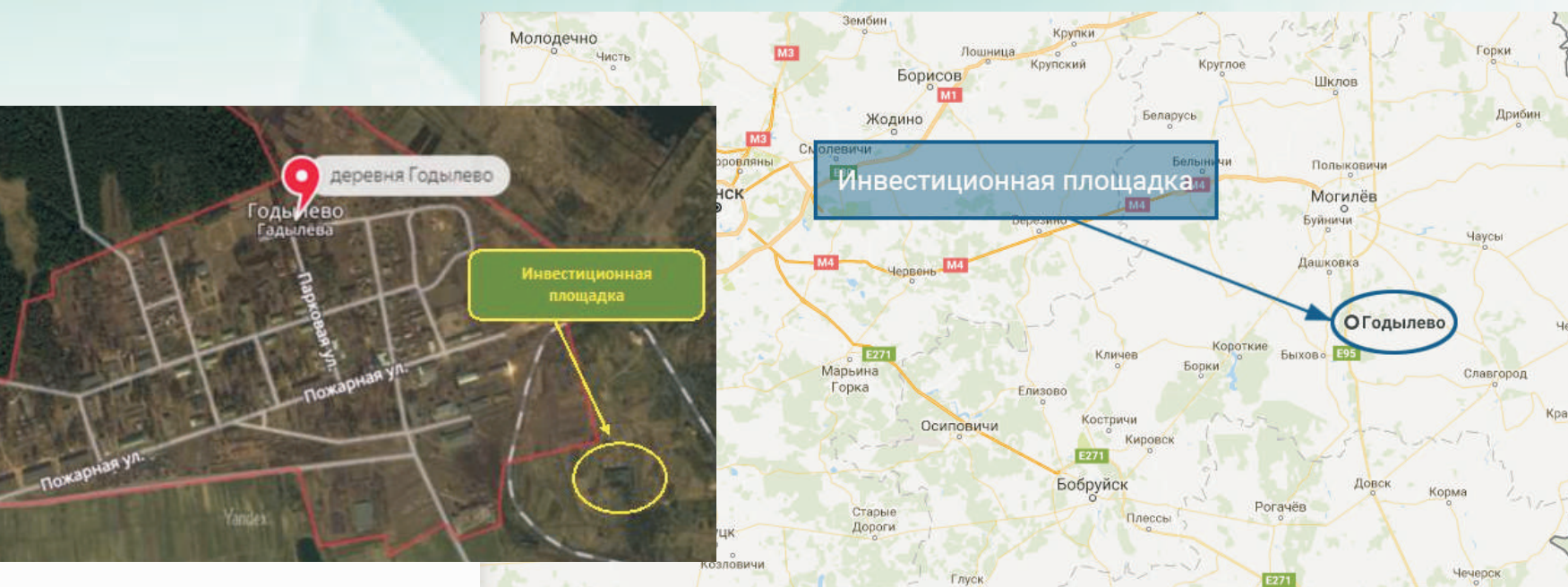
Main benefits and preferences:

- Land plot is provided without conducting any auction;
- Exemption from rental payments for the land plots and from the fee for the right to conclude a rental agreement;
- Exemption from payment of import customs duties and VAT when processing equipment, its components and spare parts are imported with the purpose of implementation of the investment project;
- Exemption from compensation of the losses incurred by agriculture and forestry sector due to land take;
- Exemption from payment of the state duty for the issuance of permits to foreign citizens and people without citizenship that grant them the right to work in the Republic of Belarus;
- Exemption from the levies earmarked for local government budgets;
- Right to construct objects of investment activity and to perform project work for the later stages at the same time;
- Commercial organizations located in the territory of small and medium-sized settlements and rural areas that conduct activities in these territories during the period of 7 years are exempt from:
 - tax on profits obtained from the realization of own-produced goods (works, services), as well as from real estate
 - tax charged on the cost of permanent structures (buildings, constructions).
- Employers and commercial organizations registered in the territory of the southeastern districts of Mogilev Region in the period from 1 July 2015 until 31 December 2020 that produce goods (fulfill works, provide services) in these territories during the period of 7 years can avail of benefits concerning compulsory insurance contributions for reaching retirement age, onset of disability and loss of breadwinner (pension insurance) paid to the State non-budgetary fund of social protection of the population. The fixed rate for such insurance contributions is 24%.
 - The expenses related to the construction of the utility and transport infrastructure required for the implementation by companies and private entrepreneurs of investment projects in the agricultural and industrial sectors in the territory of the southeastern districts of Mogilev Region will be covered, in the period from 1 July 2015 until 31 December 2020, in the following way: 50 per cent using the funds of the republican budget and 50 per cent using the funds of the Mogilev Region consolidated budget.

Construction of the bottled drinking water production line in the village of Godylyovo, Bykhov District.

Address: the village of Godylyovo, Bykhov District.

Coordinates: 53.606007, 30.375974



Competitive advantages of the project:

- Artesian well;
- Availability of the site with an approximate area of 1 ha, without any buildings, that can be used for the construction of the manufacturing workshop;
- Availability of access roads and the electrical supply network in the territory.
- The site is 2 km away from the motorway E-95 Saint-Petersburg-Odessa.



Requirements for entry of investors into the project:

Establishment of a new enterprise specialized in bottled water filling and selling finished goods in the national and foreign markets.



Main benefits and preferences:

- Land plot is provided without conducting any auction;
- Exemption from rental payments for the land plots and from the fee for the right to conclude a rental agreement;
- Exemption from payment of import customs duties and VAT when processing equipment, its components and spare parts are imported with the purpose of implementation of the investment project;
- Exemption from compensation of the losses incurred by agriculture and forestry sector due to land take;
- Exemption from payment of the state duty for the issuance of permits to foreign citizens and people without citizenship that grant them the right to work in the Republic of Belarus;
- Exemption from the levies earmarked for local government budgets;
- Right to construct objects of investment activity and to perform project work for the later stages at the same time;
- Commercial organizations located in the territory of small and medium-sized settlements and rural areas that conduct activities in these territories during the period of 7 years are exempt from:
 - tax on profits obtained from the realization of own-produced goods (works, services), as well as from real estate
 - tax charged on the cost of permanent structures (buildings, constructions).



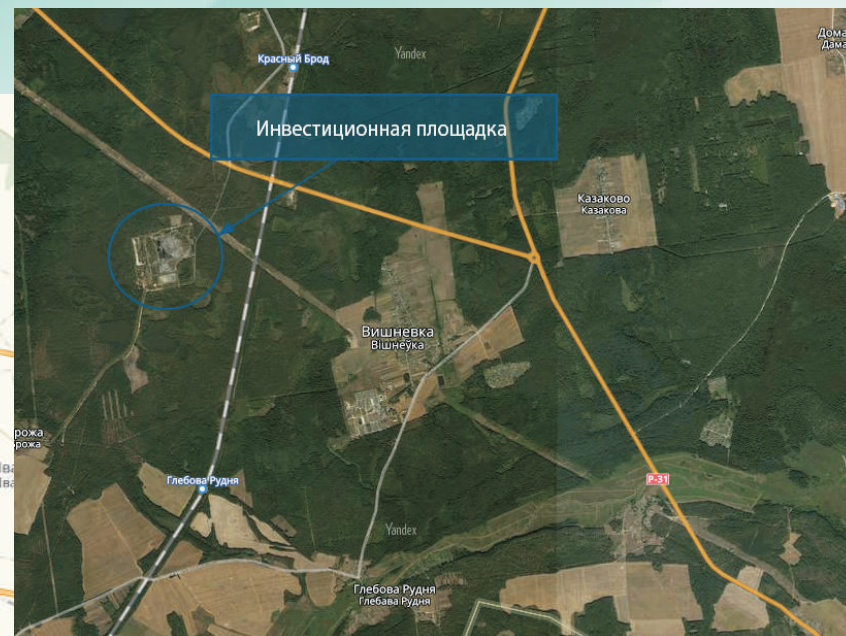
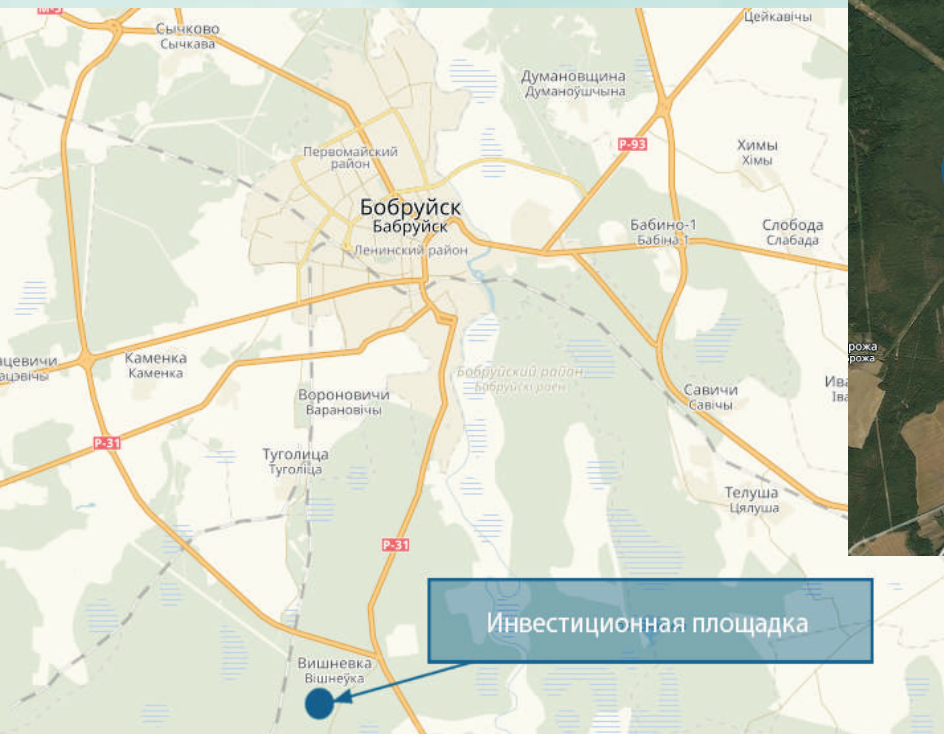
Project description:

In the territory of Bykhov District in the village of Godylyovo there is an artesian well with a capacity of 0,36 l/s. Chemical composition of water: sodium (5,8-7,9 mg-equ%), calcium (60,2-92,6 mg-equ%), magnesium (30,0-30,5 mg-equ%), chlorine (8,9-10,2 mg-equ%), sulphates (87,1-88,4 mg-equ%), hydrocarbonates (2,5-2,8 mg-equ%), fluorine (1,52 mg/dm³). Considering the chemical content the water is sulphate magnesium-calcium, with a low level of mineralization (2,9 g/dm³) and mild alkaline reaction (pH 7,7). The mineral water of the Well 1/99 is therapeutic table water that can be used as table beverage as well as the drink prescribed by a doctor when treating many types of diseases. The Well 1/99 is on the balance of the Peat Factory Dneprovskoye JSC. During project implementation it is planned to construct a manufacturing workshop specialized in bottled water filling, with an approximate area of 600 sq.m. There is a possibility to draw into economic circulation the unused property of the building with a total area of 1500 sq.m.

Construction of a waste processing plant in Bobruisk District

Address: the village of Vishnevka, Bobruisk District

Coordinates: 53.013448, 29.146864




Requirements for entry of investors into the project:
Establishment of a new enterprise.



Main benefits and preferences:

- Land plot is provided without conducting any auction;
- Exemption from rental payments for the land plots and from the fee for the right to conclude a rental agreement;
- Exemption from payment of import customs duties and VAT when processing equipment, its components and spare parts are imported with the purpose of implementation of the investment project;
- Exemption from compensation of the losses incurred by agriculture and forestry sector due to land take;
- Exemption from payment of the state duty for the issuance of permits to foreign citizens and people without citizenship that grant them the right to work in the Republic of Belarus;
- Exemption from the levies earmarked for local government budgets;
- Right to construct objects of investment activity and to perform project work for the later stages at the same time;
- Commercial organizations located in the territory of small and medium-sized settlements and rural areas that conduct activities in these territories during the period of 7 years are exempt from :
 - tax on profits obtained from the realization of own-produced goods (works, services), as well as from real estate
 - tax charged on the cost of permanent structures (buildings, constructions).

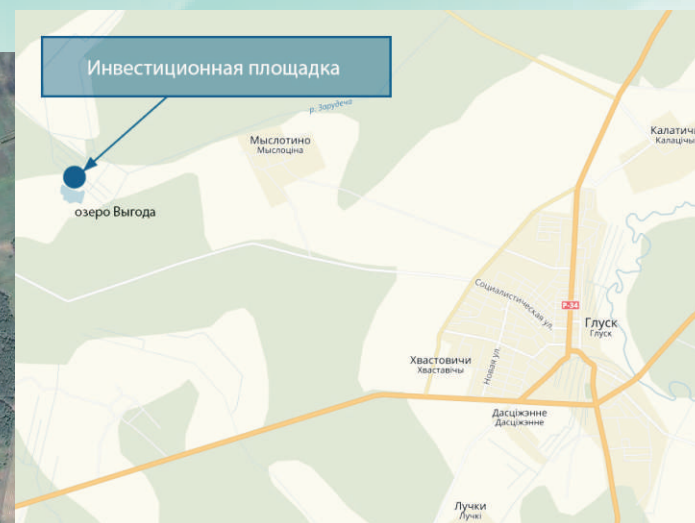
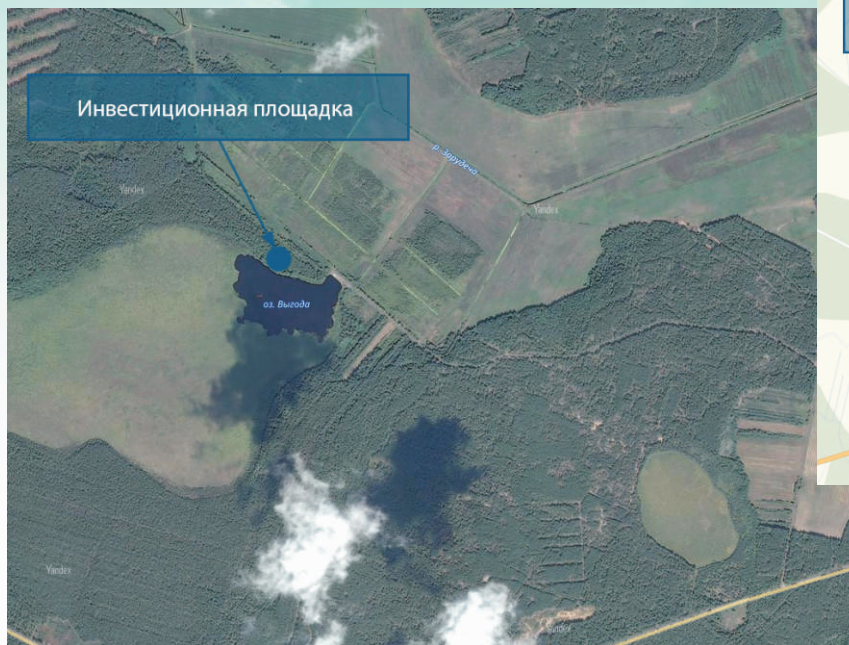


 **Project description:** During project implementation it is planned to construct and use the waste processing plant with a capacity of 90-100 kilotons per year, to equip the plant with the machinery in order to be able to receive industrial and municipal solid waste from the enterprises situated in Bobruisk and Bobruisk District, to divide them into classes and types of secondary raw materials, to sort secondary raw materials, to accumulate and to bring for recycling. The approximate area of the land plot is 10 ha.

Establishment of the sapropel mining and processing enterprise in Glusk District

Address: the territory of Lake Vygoda near the village of Myslotina

Coordinates: 53° 20' 12" N; 32° 27' 46" E



Competitive advantages of the project:

- Unlimited local raw materials base. The district has explored sapropel deposits with reserves of 393,7 thousand cubic meters; total reserves of major peat deposits amount to 13,150 kilotons;
- Sapropel is good for cosmetic and therapeutic applications thanks to its mineral properties;
- Availability of qualified manpower;
- A well-developed transport network. In the territory of Glusk District there are several road traffic routes: P43 Krichev-Rogachev-Bobruisk-Slutsk-Ivatsevichi (former highway to Moscow or to Warsaw), P55 Bobruisk-Glusk-Liuban-Soligorsk, P34 Osipovichi-Glusk-Oktiabrski-Kalinkovichi.



Requirements for entry of investors into the project:

Establishment of a new enterprise that will process raw materials and sell finished goods in the national and foreign markets.



Main benefits and preferences:

- Land plot is provided without conducting any auction;
- Exemption from rental payments for the land plots and from the fee for the right to conclude a rental agreement;
- Exemption from payment of import customs duties and VAT when processing equipment, its components and spare parts are imported with the purpose of implementation of the investment project;
- Exemption from compensation of the losses incurred by agriculture and forestry sector due to land take;
- Exemption from payment of the state duty for the issuance of permits to foreign citizens and people without citizenship that grant them the right to work in the Republic of Belarus;
- Exemption from the levies earmarked for local government budgets;
- Right to construct objects of investment activity and to perform project work for the later stages at the same time;
- Commercial organizations located in the territory of small and medium-sized settlements and rural areas that conduct activities in these territories during the period of 7 years are exempt from:
 - tax on profits obtained from the realization of own-produced goods (works, services), as well as from real estate
 - tax charged on the cost of permanent structures (buildings, constructions).



Investment project concept:

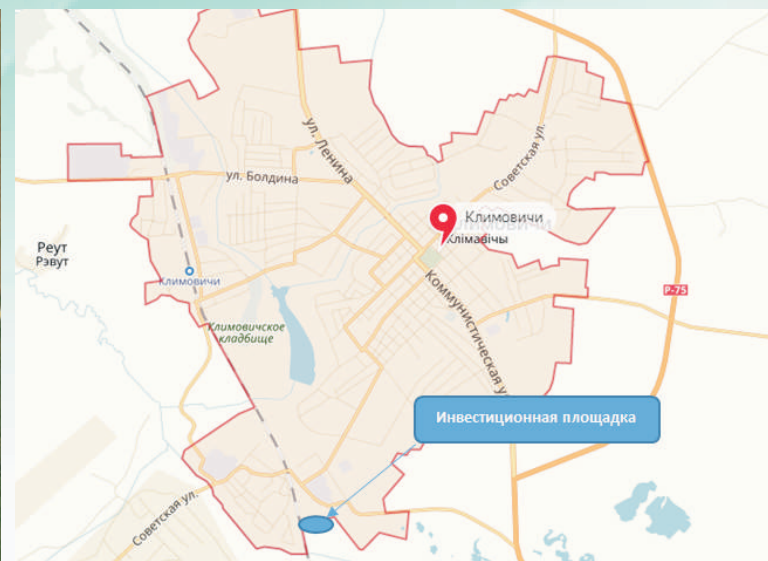
The establishment of the enterprise that will manufacture goods for cosmetic/therapeutic applications and organic agriculture, taking advantage of the potential of local organo-mineral materials in Glusk District (peat, sapropel). It is possible to consider various ways of usage. The sapropel deposit is situated on Lake Vygoda that lays 8 km to the northwest from Glusk. There is a hard-surface road that runs from Glusk to Lake Vygoda. The explored sapropel deposits with reserves of 393,7 thousand cubic meters belong to Category A. Volume of sapropels – 3021 thousand cubic meters, average water depth – 0,5 m. Average thickness of sapropels – 3,5 m, maximum thickness of sapropels – 5,8 m. Organic matter content in sapropels – 70-75%, ash content – 20%, SiO₂ – 12,4%; Al₂O₃ – 0,9%; Fe₂O₃ – 1,0%; CaO – 3,8%; MgO – 0,3%; SO₃ – 0,6%; P₂O₅ – 0,2%; K₂O – 0,1%; N_{tot} – 3,1%; PH(KCl) – 7,4 units. During project implementation it is planned to construct a production site for placing the equipment, outdoor and indoor storages, amenity space. The approximate production capacity is up to 20 kilotons of finished products per year.



Organization of construction materials manufacturing in Klimovichi, Mogilev Region

Address: the territory near per. 50 let SSSR in Klimovichi

Coordinates: 53° 34'59"N; 31° 56'45"E



Competitive advantages of the project:

- Unlimited reserves of mineral resources in the explored deposits, suitable for construction materials manufacturing and accessible by transport:
 - 10 chalk deposits with the total amount of reserves 32,4 million tons, among them: Reut – 10,8 million tons, Klimovichskoye – 8,8 million tons, Melovaya gora (village of Ivanovsk) – 5,1 million tons
 - 10 clay deposits with the total amount of reserves 0,3 million m³
 - 13 deposits of sand-gravel mixture and sand with the total amount of reserves 25,2 million m³
 - 6 deposits of cement raw materials with the total amount of reserves 57 million tons
 - Availability of qualified manpower.
 - A well-developed transport network: in the territory of Klimovichi District there are several traffic routes: railway lines Orsha-Unecha and Mogilev-Roslavl, motorways Bobruisk-Rogachev-Krichev-Roslavl, Klimovichi-Kostyukovich and Klimovichi-Khotimsk.
 - The investment site has no buildings and constructions. The utilities system is situated in close vicinity to the site. There is a possibility to provide the territory with the railway service.



Investment project concept:

During project implementation it is planned to construct a new plant, on the land plot with an approximate area of 1,8 ha, specialized in the production of autoclaved aerated concrete blocks/panels and dry building mixes using the reserves of raw materials in Klimovichi District.



Requirements for entry of investors into the project:

Establishment of a new enterprise that will process raw materials and sell finished goods in the national and foreign markets.



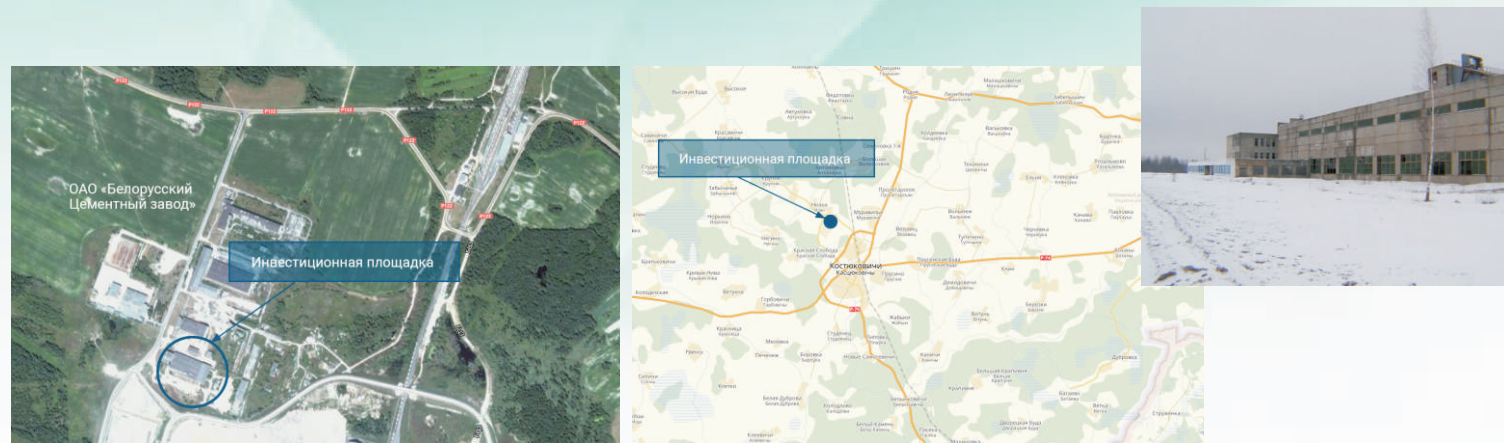
Main benefits and preferences:

- Land plot is provided without conducting any auction;
- Exemption from rental payments for the land plots and from the fee for the right to conclude a rental agreement;
- Exemption from payment of import customs duties and VAT when processing equipment, its components and spare parts are imported with the purpose of implementation of the investment project;
- Exemption from compensation of the losses incurred by agriculture and forestry sector due to land take;
- Exemption from payment of the state duty for the issuance of permits to foreign citizens and people without citizenship that grant them the right to work in the Republic of Belarus;
- Exemption from the levies earmarked for local government budgets;
- Right to construct objects of investment activity and to perform project work for the later stages at the same time;
- Commercial organizations located in the territory of small and medium-sized settlements and rural areas that conduct activities in these territories during the period of 7 years are exempt from tax on profits obtained from the realization of own-produced goods (works, services), as well as from real estate tax charged on the cost of permanent structures (buildings, constructions).
 - Employers and commercial organizations registered in the territory of the southeastern districts of Mogilev Region in the period from 1 July 2015 until 31 December 2020 that produce goods (fulfill works, provide services) in these territories during the period of 7 years can avail of benefits concerning compulsory insurance contributions for reaching retirement age, onset of disability and loss of breadwinner (pension insurance) paid to the State non-budgetary fund of social protection of the population. The fixed rate for such insurance contributions is 24%.
 - The expenses related to the construction of the utility and transport infrastructure required for the implementation by companies and private entrepreneurs of investment projects in the agricultural and industrial sectors in the territory of the southeastern districts of Mogilev Region will be covered, in the period from 1 July 2015 until 31 December 2020, in the following way: 50 per cent using the funds of the republican budget and 50 per cent using the funds of the Mogilev Region consolidated budget.

Organization of reinforced concrete structures production at the premises of the unused object in Kostyukovichy District

Address: the territory adjacent to the Belarusian Cement Plant JSC, Kostyukovichy District

Coordinates: 53° 23'57"N; 32° 0'39"E



Competitive advantages of the project:

- Unlimited reserves of mineral resources in the explored deposits, suitable for concrete products manufacturing and accessible by transport: the deposit of sand-gravel mixture and sand Kanichskoye (1,95 million tons) that is being developed by the Belarusian Cement Plant JSC; the sand deposit Studenets (157,2 thousand m³) that is being developed by the Communal Unitary Enterprise "Mogilevobldorstroy" specialized in road design, mending and construction. In the territory of the neighbouring Klimovichy District there are also deposits of construction sands as well as sand and gravel mix: 13 deposits with the total amount of reserves 25,2 million m³. The tripoli deposit Stalnoye in Khotimsk District is potentially important. Tripoli can be used as active additive for cement mortars.
- Availability of cement, lime, chalk produced by the Belarusian Cement Plant JSC (the territory of the plant adjoins the investment site);
- Availability of access ways to the site: a road, soil embankment for the railway line;
- Availability of qualified manpower;
- A well-developed transport network: Kostyukovichy is a road junction where the roads to Klimovichy and Surazh meet (motorway P75) as well as the roads to Krasnopolye and Khotimsk (motorway P74), Cherikov (motorway P122), railway line Orsha-Unecha.
- There is a possibility to provide the territory with the railway service.



Investment project concept:

During project implementation it is planned to organize the concrete structures production, including the production of make-to-order non-standard items, using the products manufactured by the Belarusian Cement Plant JSC (cement, lime, chalk). Within the project it is also planned to draw into economic circulation the unused buildings (with a total area of 2 210 sq.m.), open storage areas for raw materials and finished goods previously owned by the former RUE Trust N. 10 "Cementstroy" and situated on the land plot with a total area of 3,5 ha.



Requirements for entry of investors into the project:

Establishment of a new enterprise that will process raw materials and sell finished goods in the national and foreign markets.



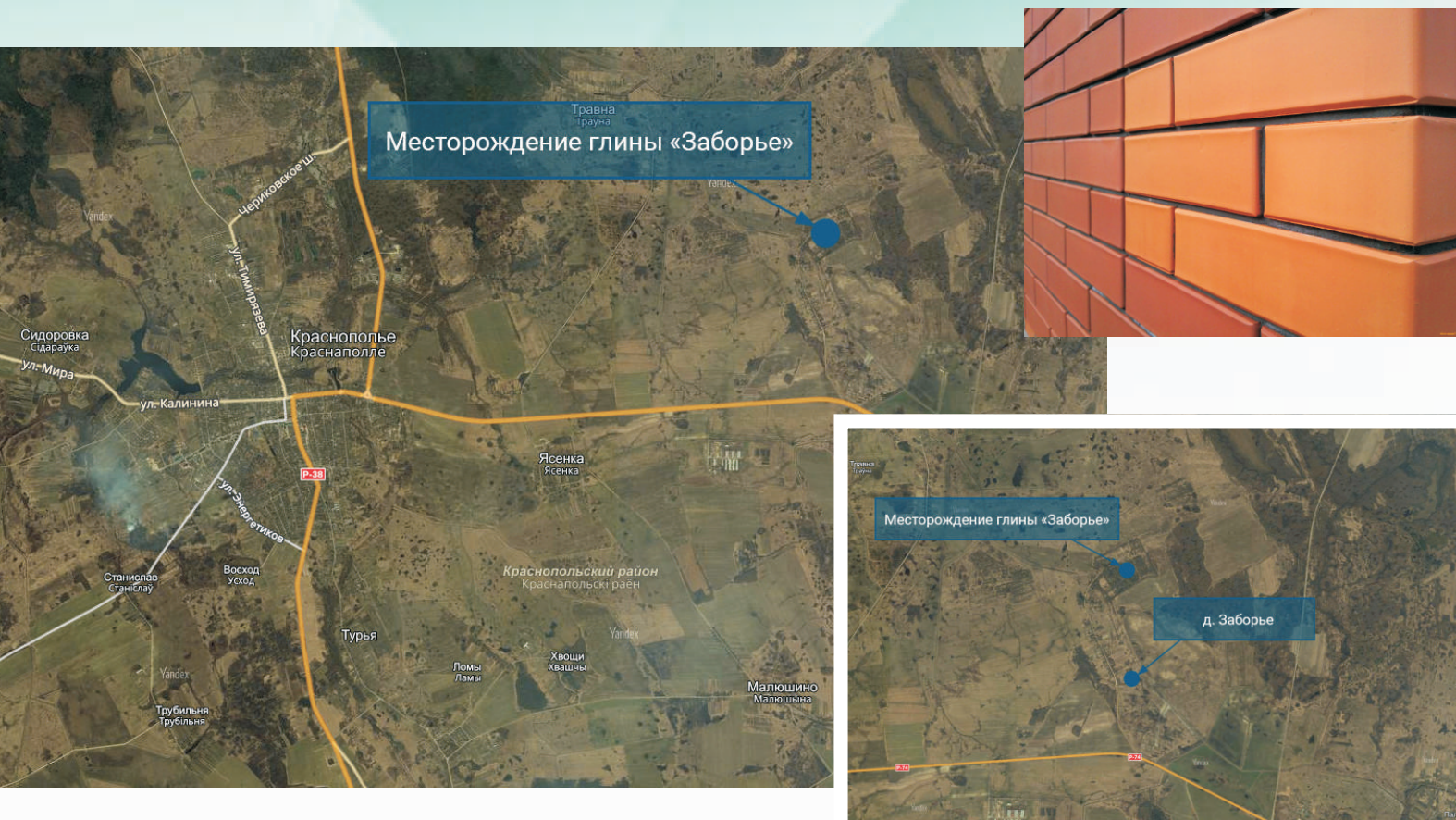
Main benefits and preferences:

- Land plot is provided without conducting any auction;
- Exemption from rental payments for the land plots and from the fee for the right to conclude a rental agreement;
- Exemption from payment of import customs duties and VAT when processing equipment, its components and spare parts are imported with the purpose of implementation of the investment project;
- Exemption from compensation of the losses incurred by agriculture and forestry sector due to land take;
- Exemption from payment of the state duty for the issuance of permits to foreign citizens and people without citizenship that grant them the right to work in the Republic of Belarus;
- Exemption from the levies earmarked for local government budgets;
- Right to construct objects of investment activity and to perform project work for the later stages at the same time;
- Commercial organizations located in the territory of small and medium-sized settlements and rural areas that conduct activities in these territories during the period of 7 years are exempt from
 - tax on profits obtained from the realization of own-produced goods (works, services), as well as from real estate tax charged on the cost of permanent structures (buildings, constructions).
- Employers and commercial organizations registered in the territory of the southeastern districts of Mogilev Region in the period from 1 July 2015 until 31 December 2020 that produce goods (fulfill works, provide services) in these territories during the period of 7 years can avail of benefits concerning compulsory insurance contributions for reaching retirement age, onset of disability and loss of breadwinner (pension insurance) paid to the State non-budgetary fund of social protection of the population. The fixed rate for such insurance contributions is 24%.
- The expenses related to the construction of the utility and transport infrastructure required for the implementation by companies and private entrepreneurs of investment projects in the agricultural and industrial sectors in the territory of the southeastern districts of Mogilev Region will be covered, in the period from 1 July 2015 until 31 December 2020, in the following way: 50 per cent using the funds of the republican budget and 50 per cent using the funds of the Mogilev Region consolidated budget.

Establishment of the enterprise for production of ceramic bricks near the clay deposit Zaborye, Krasnopolye District

Address: the territory near the village of Zaborye, Krasnopolye District

Coordinates: 53° 20'57"N; 31° 29'31"E



Investment project concept:

During project implementation it is planned to establish a new enterprise that will produce ceramic bricks, with a capacity of about 5 million pieces per year, as well as figured ceramic products, and will be situated on the land plot with a total area of 30 ha, including the mining lease area.

Competitive advantages of the project:



- Availability of the explored clay deposit: According to the minutes of the Territorial Development Commission of 27 September 1968 N. 16 (ID-number 6358), the clay reserves are approved in the amount of 425 thousand cubic meters over an area of 13 ha. The deposit had been developed until 1998. The remaining reserves of clay are 295 thousand cubic meters. In the territory of Krasnopolye District there is the sand deposit (Galynets) – 130 thousand cubic meters, the chalk deposit (Vydrenka) – 253 thousand cubic meters.
- There is the access road leading to the investment site. The distance from the investment site to the motorway P74 Cherikov-Krasnopolye-Khotimsk-Gornya (border of the Russian Federation) is 1.8 km. The distance to the state border of the Russian Federation is 27 km. The nearest railway station Kommunar (Kostiukovich District) is 51 km away from the site.
- Availability of qualified manpower (the site is 6 km away from Krasnopolye).



Requirements for entry of investors into the project:

Establishment of a new enterprise that will process raw materials and sell finished goods in the national and foreign markets.



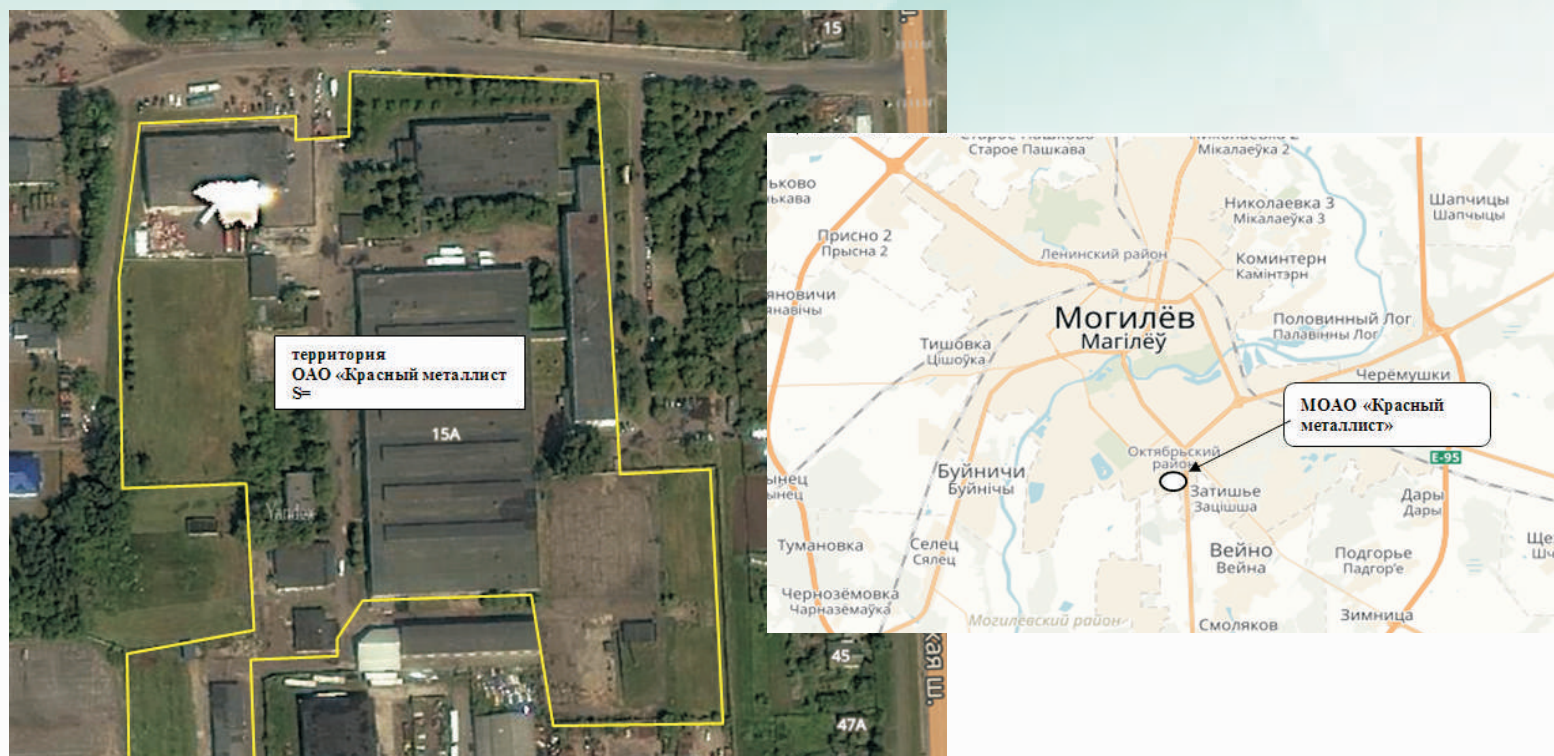
Main benefits and preferences:

- Land plot is provided without conducting any auction;
- Exemption from rental payments for the land plots and from the fee for the right to conclude a rental agreement;
- Exemption from payment of import customs duties and VAT when processing equipment, its components and spare parts are imported with the purpose of implementation of the investment project;
- Exemption from compensation of the losses incurred by agriculture and forestry sector due to land take;
- Exemption from payment of the state duty for the issuance of permits to foreign citizens and people without citizenship that grant them the right to work in the Republic of Belarus;
- Exemption from the levies earmarked for local government budgets;
- Right to construct objects of investment activity and to perform project work for the later stages at the same time;
- Commercial organizations located in the territory of small and medium-sized settlements and rural areas that conduct activities in these territories during the period of 7 years are exempt from:
 - tax on profits obtained from the realization of own-produced goods (works, services), as well as from real estate
 - tax charged on the cost of permanent structures (buildings, constructions).
- Employers and commercial organizations registered in the territory of the southeastern districts of Mogilev Region in the period from 1 July 2015 until 31 December 2020 that produce goods (fulfill works, provide services) in these territories during the period of 7 years can avail of benefits concerning compulsory insurance contributions for reaching retirement age, onset of disability and loss of breadwinner (pension insurance) paid to the State non-budgetary fund of social protection of the population. The fixed rate for such insurance contributions is 24%.
 - The expenses related to the construction of the utility and transport infrastructure required for the implementation by companies and private entrepreneurs of investment projects in the agricultural and industrial sectors in the territory of the southeastern districts of Mogilev Region will be covered, in the period from 1 July 2015 until 31 December 2020, in the following way: 50 per cent using the funds of the republican budget and 50 per cent using the funds of the Mogilev Region consolidated budget.

Project: Production modernization of the Mogilev Open Joint Stock Company Krasny Metallist

Address: Gomelskoe shosse, 15A, Mogilev, www.kramet.by

Coordinates: 53.857160, 30.355604



Investment project concept and conditions:

Acquisition of the Mogilev Open Joint Stock Company Krasny Metallist as an asset complex and its subsequent modernization in one of the following ways:

- participation in the company's share capital;
- acquisition of the enterprise as an asset complex;
- establishment of a joint venture company.



Terms for sale of the shares:

- preservation of the existing jobs as at the date of conclusion of the agreement for sale and purchase of shares, for a period of not less than 5 years after concluding the agreement for sale and purchase of shares;
- reservation of the employees' rights, benefits and compensations, as required by the Law of the Republic of Belarus and by the local normative legal acts that regulate social, economic and labor relations between the employer and the employees;
- preservation of the main activity and production profile within 3 years after concluding the agreement for sale and purchase of shares;
- introducing investments for the production modernization in an amount not less than 1 million euro within 3 years after concluding the purchase and sale agreement.



Main benefits and preferences:

- Simplification of the procedure for providing land plots that presupposes the lease without conducting any auction;
- Exemption from rental payments for the land plots and from the fee for the right to conclude a rental agreement;
- Exemption from payment of import customs duties and VAT when processing equipment, its components and spare parts are imported with the purpose of implementation of the investment project;
- Exemption from compensation of the losses incurred by agriculture and forestry sector due to land take;
- Exemption from payment of the state duty for the issuance of permits to foreign citizens and people without citizenship that grant them the right to work in the Republic of Belarus;
- Exemption from the levies earmarked for local government budgets;
- Right to construct objects of investment activity and to perform project work for the later stages at the same time.



Enterprise characteristics:

The main type of activity of the Mogilev Open Joint Stock Company Krasny Metallist is the production of knives, light metal packages, houseware and kitchen utensils, other metal goods.

The enterprise owns the following buildings and constructions:

- administrative and industrial buildings and facilities with a total area of 18025,3 sq.m.
- auxiliary and service buildings with a total area of 4029 sq.m.
- land plot in permanent use, with a total area of 6,0972 ha.

Establishment of the enterprise specialized in the production of furniture fittings and located in the territory of the FEZ Mogilev

Layout plan of the production sites in the territory of Mogilev offered by the FEZ Mogilev



Investment prospects of the project:

- In the Republic of Belarus the demand for furniture fittings is mainly satisfied by import deliveries;
- Inadequate production output and insufficient quality of furniture fittings in the countries of the Eurasian Economic Union as well as poor assortment of the domestic products;
- The annual demand of the Belarusian market for this type of products is more than 55 million US dollars;
- Possibility of the cooperation (localization of production) with large enterprises – the FEZ Mogilev residents that manufacture furniture;
- It is planned to sell the finished products in the domestic market and in the markets of the neighbouring countries and countries of the EEU;
- The market of furniture fittings is on the rise. More than 12 tons of various furniture fittings are being imported in the Republic of Belarus. The market research that has been recently conducted shows that more than 67% of furniture fittings in the market of the Russian Federation are import products (over 1 billion US dollars if expressed in monetary terms).

Advantages for those who intent to locate their production in the FEZ Mogilev:

- advantageous geographical location at the junction of the main European transport corridors
- transport accessibility
- advanced industrial sector: woodworking industry, chemical industry, metalworking production, instrument-making industry, machine-building industry, building materials manufacturing
- availability of highly qualified manpower
- developed transportation and utility infrastructure of the sites offered by the FEZ Mogilev
- up to 30% of savings on costs of entry
- possibility to offer land plots and real estate assets, for the purpose of production organization, that will fully meet any requirements of the investors.



Investment project concept:

During project implementation it is planned to construct a new enterprise specialized in the production of furniture fittings.

Product range:

- Front furniture fittings (handles, decorative elements)
- Connecting fittings (hinges, dogbones, drywall screws, dowels, angles, bearers, etc.)
- Complex components (drawer slides, rotating devices, transformation mechanisms)

Customers:

- the FEZ Mogilev residents that manufacture furniture (localization of production)
- enterprises operating in the furniture industry of the Republic of Belarus
- furniture manufacturing enterprises of the Eurasian Economic Union
- wholesale and retail distribution networks



Benefits and preferences for the FEZ Mogilev residents

The FEZ Mogilev residents are exempt from:

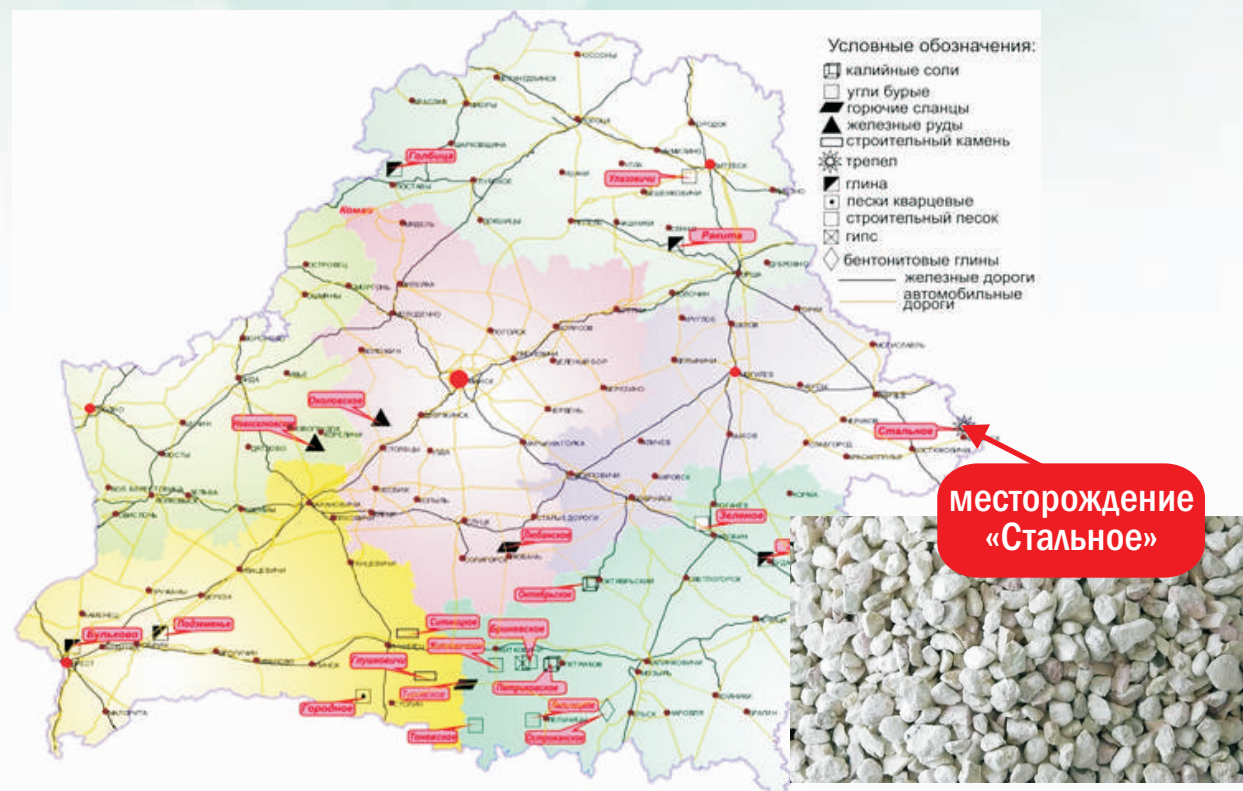
- income tax – for a period of 10 years; after this 10-year period the tax will be paid at the rate fixed by the fiscal legislation and reduced by 50%;
- real estate tax imposed on the buildings and constructions (including construction in progress), located in the territory of the free economic zone, regardless of the purpose they are used for.

Additional preferences and guarantees for the investors:

- exemption from the land tax imposed on the land plots located within the boundaries of the free economic zone and meant for construction projects – for the period of engineering and construction, but not exceeding 5 years;
- exemption from rental payments for the land plots used by the residents of the free economic zones, located within the boundaries of the free economic zones and put at the disposal of the residents of the free economic zones for construction purposes – for the period of engineering and construction, but not exceeding 5 years;
- exoneration from compensatory planting and exemption from the payments intended to recompense the cost of the plants that have been removed or transplanted during the construction works defined in the investment project within the boundaries of the free economic zone;
- exemption from the obligation to surrender foreign exchange proceeds.

Establishment of the tripoli extracting and processing enterprise, deposit Stalnoye, Khotimsk District

Address: the territory near the village of Vasilyevka-2, Khotimsk District
Coordinates: 53° 29'2" N; 32° 34'8" E



месторождение
«Стальное»



Competitive advantages of the project:

- the deposit has been prepared for the industrial development, it is the largest in the Republic of Belarus. There are more than 30 million tons of explored reserves of carbonaceous tripoli. The deposit area is 500 ha. The formation depth is 3-6 m, the stratum thickness is 10-14 m.
- a well-developed transport network. The quarry is 7 km away from the town of Khotimsk. The nearest railway station Kommunny is 45 km away from the deposit. The distance to the border of the Russian Federation is 14 km.
- a wide range of applications:
 - *in the agricultural sector (demand in the Republic of Belarus – not less than 50 kilotons):* feed additives and components of agromineral fertilizers.
 - *in the construction industry:* it is used as active filler to produce dry building mixes, thermal insulating materials and fireproof materials; it is also used as active additive to produce cement and cement mortars.
 - *in the industrial sector:* it is used as absorbent and filler in the petrochemical and gas industry, in the chemical and food manufacturing industry, as well as for drinking water treatment and discharge treatment.



Requirements for entry of investors into the project:

Establishment of a new enterprise that will extract and process raw materials and will sell finished goods in the national and foreign markets.



Main benefits and preferences:

- Land plot is provided without conducting any auction;
- Exemption from rental payments for the land plots and from the fee for the right to conclude a rental agreement;
- Exemption from payment of import customs duties and VAT when processing equipment, its components and spare parts are imported with the purpose of implementation of the investment project;
- Exemption from compensation of the losses incurred by agriculture and forestry sector due to land take;
- Exemption from payment of the state duty for the issuance of permits to foreign citizens and people without citizenship that grant them the right to work in the Republic of Belarus;
- Exemption from the levies earmarked for local government budgets;
- Right to construct objects of investment activity and to perform project work for the later stages at the same time;
- Commercial organizations located in the territory of small and medium-sized settlements and rural areas that conduct activities in these territories during the period of 7 years are exempt from:
 - tax on profits obtained from the realization of own-produced goods (works, services), as well as from real estate
 - tax charged on the cost of permanent structures (buildings, constructions).

Investment project concept:

During project implementation it is planned to establish the enterprise that will develop the deposit Stalnoye, Khotimsk District, and will extract tripoli.

Establishment of the enterprise specialized in advanced processing of sawing products in Cherikov District

Address: 2,7 km to the east from Veremeiki agro-town, Cherikov District
Coordinates: 53.760121, 31.324448



Investment project concept:

It is planned that within the project a new enterprise for advanced processing of sawing products will be established in Cherikov District. The project includes technical measures for the construction and putting into operation of new manufacturing workshops, among them those for manufacturing high-quality moldings. It is proposed to recycle waste materials and to organize fuel pellets production for that purpose. It is planned to build a drying workshop. In the territory of the enterprise there will be a wholesale and retail warehouse store organized in order to sell both its own output and other shaped wooden products.

During project implementation it is planned to erect an administrative and amenity building, to put into operation the utilities system, to provide roads with the necessary facilities, to equip the territory with services. It is also planned to equip the enterprise with up-to-date chipper canterers, multiple cutting and cross cutting machines, sorting machines, as well as with a woodchipping complex, machines for special sawing purposes, special automotive equipment.



Main site characteristics:

- Area: - 11ha
- Cadastral values per 1 m2: - 0,01
- Category: - lands included in the district reserve and covered by trees and shrubs
- Utility and transport infrastructure:
 - water supply: - a water tower is 1,5 km away from the site
 - water discharge (canalization): - no
 - electric power supply: - a transforming substation 10 kW
 - gas supply: - gas distribution station "Veremeiki" (with a capacity of 26800 m3/h) is 2.6 km away from the site
- access routes: - a gravel road
- telephone network: - location within mobile networks coverage



Requirements for entry of investors into the project:

Establishment of a new enterprise that will process raw materials and sell finished goods in the national and foreign markets.



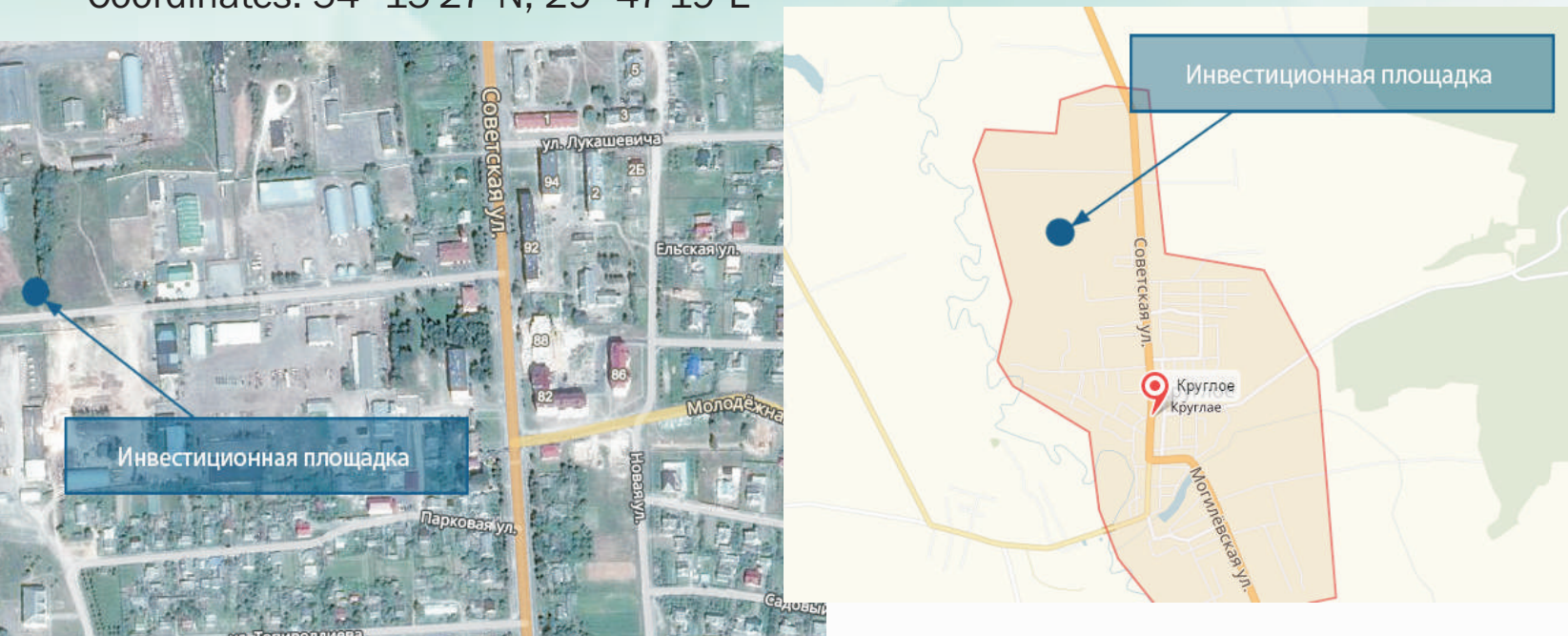
Main benefits and preferences:

- Land plot is provided without conducting any auction;
- Exemption from rental payments for the land plots and from the fee for the right to conclude a rental agreement;
- Exemption from payment of import customs duties and VAT when processing equipment, its components and spare parts are imported with the purpose of implementation of the investment project;
- Exemption from compensation of the losses incurred by agriculture and forestry sector due to land take;
- Exemption from payment of the state duty for the issuance of permits to foreign citizens and people without citizenship that grant them the right to work in the Republic of Belarus;
- Exemption from the levies earmarked for local government budgets;
- Right to construct objects of investment activity and to perform project work for the later stages at the same time;
- Commercial organizations located in the territory of small and medium-sized settlements and rural areas that conduct activities in these territories during the period of 7 years are exempt from:
 - tax on profits obtained from the realization of own-produced goods (works, services), as well as from real estate
 - tax charged on the cost of permanent structures (buildings, constructions).
- Employers and commercial organizations registered in the territory of the southeastern districts of Mogilev Region in the period from 1 July 2015 until 31 December 2020 that produce goods (fulfill works, provide services) in these territories during the period of 7 years can avail of benefits concerning compulsory insurance contributions for reaching retirement age, onset of disability and loss of breadwinner (pension insurance) paid to the State non-budgetary fund of social protection of the population. The fixed rate for such insurance contributions is 24%.
 - The expenses related to the construction of the utility and transport infrastructure required for the implementation by companies and private entrepreneurs of investment projects in the agricultural and industrial sectors in the territory of the southeastern districts of Mogilev Region will be covered, in the period from 1 July 2015 until 31 December 2020, in the following way: 50 per cent using the funds of the republican budget and 50 per cent using the funds of the Mogilev Region consolidated budget.

Establishment of the enterprise specialized in the production of frozen vegetables, mushrooms, berries, fruit fillers and vegetable semi-finished products in vacuum-sealed packs in Krugloye.

Address: the site is situated in the industrial zone, to the west from the territory of the enterprise Pride Union JLLC, Sovietskaya str. 83 I, Krugloye.

Coordinates: 54° 15'27" N, 29° 47'19" E



Competitive advantages of the project:

- Local raw materials base (forests cover 30,1% of all land area in Krugloye District, swamps – 3,8%);
- Absence of similar manufacturing plants in the territory of neighboring districts;
- Availability of the site with an approximate area of 1 ha, without any buildings, that can be used for the construction of the manufacturing plant;
- Availability of the utilities system in close vicinity to the site: water supply network, electrical supply network, gas distribution network, heat supply network are situated at a distance of 50 meters.



Requirements for entry of investors into the project:

Establishment of a new enterprise that will process raw materials and sell finished goods in the national and foreign markets.



Main benefits and preferences:

- Land plot is provided without conducting any auction;
- Exemption from rental payments for the land plots and from the fee for the right to conclude a rental agreement;
- Exemption from payment of import customs duties and VAT when processing equipment, its components and spare parts are imported with the purpose of implementation of the investment project;
- Exemption from compensation of the losses incurred by agriculture and forestry sector due to land take;
- Exemption from payment of the state duty for the issuance of permits to foreign citizens and people without citizenship that grant them the right to work in the Republic of Belarus;
- Exemption from the levies earmarked for local government budgets;
- Right to construct objects of investment activity and to perform project work for the later stages at the same time;
- Commercial organizations located in the territory of small and medium-sized settlements and rural areas that conduct activities in these territories during the period of 7 years are exempt from:
 - tax on profits obtained from the realization of own-produced goods (works, services), as well as from real estate
 - tax charged on the cost of permanent structures (buildings, constructions).



Project description:

During project implementation it is planned to construct a new manufacturing site specialized in shock freezing of vegetables, mushrooms, berries, fruit fillers and vegetable semi-finished products with a capacity of 1 kilotons, a vegetable storehouse with a total area of about 2000 sq.m., as well as to organize the picking wild berries and mushrooms, their processing and further export wholesale of frozen semi-finished products. The local population of Krugloye District, Belynichi District, Tolochin District that picks wild berries and mushrooms and grows fruits and berries in the private farm households will supply them for the enterprise. In the future it will be possible to provide the enterprise with land plots that could be used for growing berry and vegetable crops.